

LOGGESIDE

MOONLIGHT BASIN

LOGGESIDE EAST



BACK EASTERN VIEW

TOWNHOME 13
4 BED / 5 BATH
3,288 SF

TOWNHOME 12
3 BED / 4 BATH
3,078 SF

TOWNHOME 11
3 BED / 4 BATH
3,078 SF

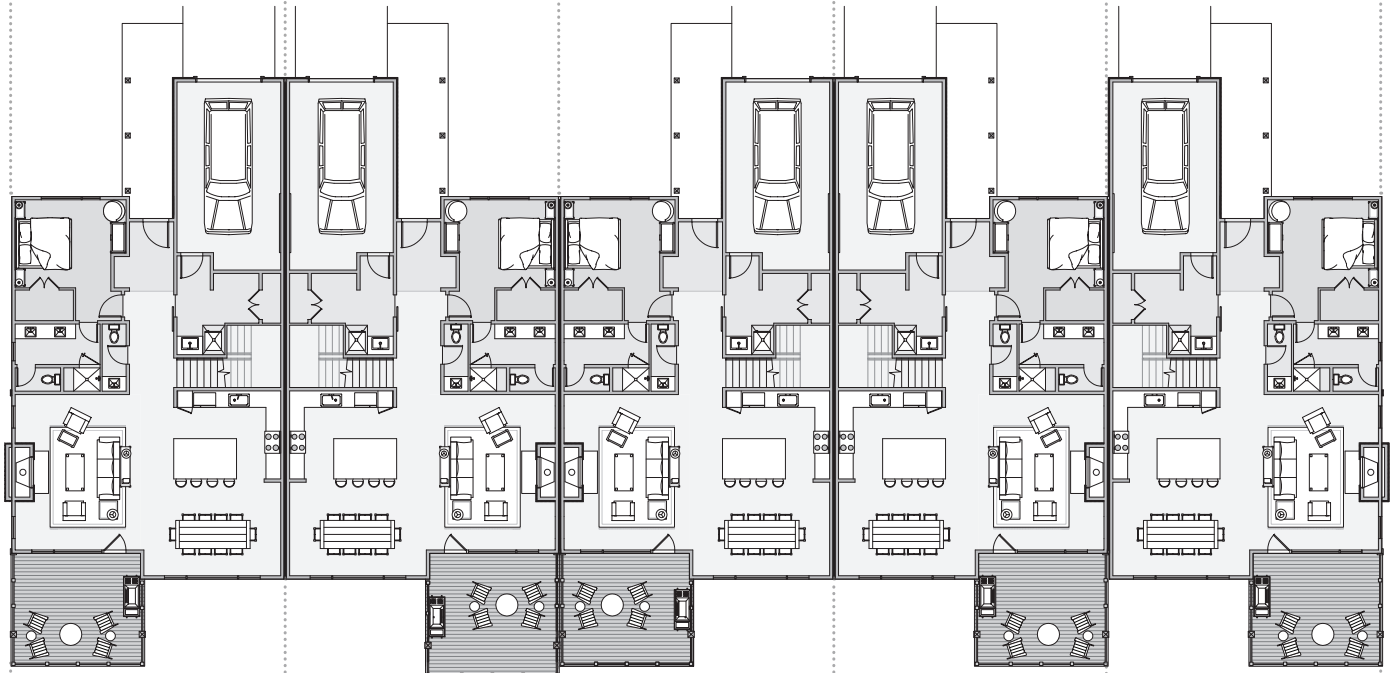
TOWNHOME 10
3 BED / 4 BATH
3,078 SF

TOWNHOME 9
4 BED / 5 BATH
3,288 SF

MAIN LEVEL

1,710 SF

- Great Room with Wood-burning Fireplace
- Open Kitchen
- Guest Suite with Walk-in Closet and Bath
- Mud Room with Laundry
- Oversized 1-car Garage
- Rear Deck



LOWER LEVEL

1,368-1,578 SF

- Master Suite with Walk-in Closet and Bath
- Guest Suite
- Family Room
- Common Bath
- Bunk Room (9 & 13)

