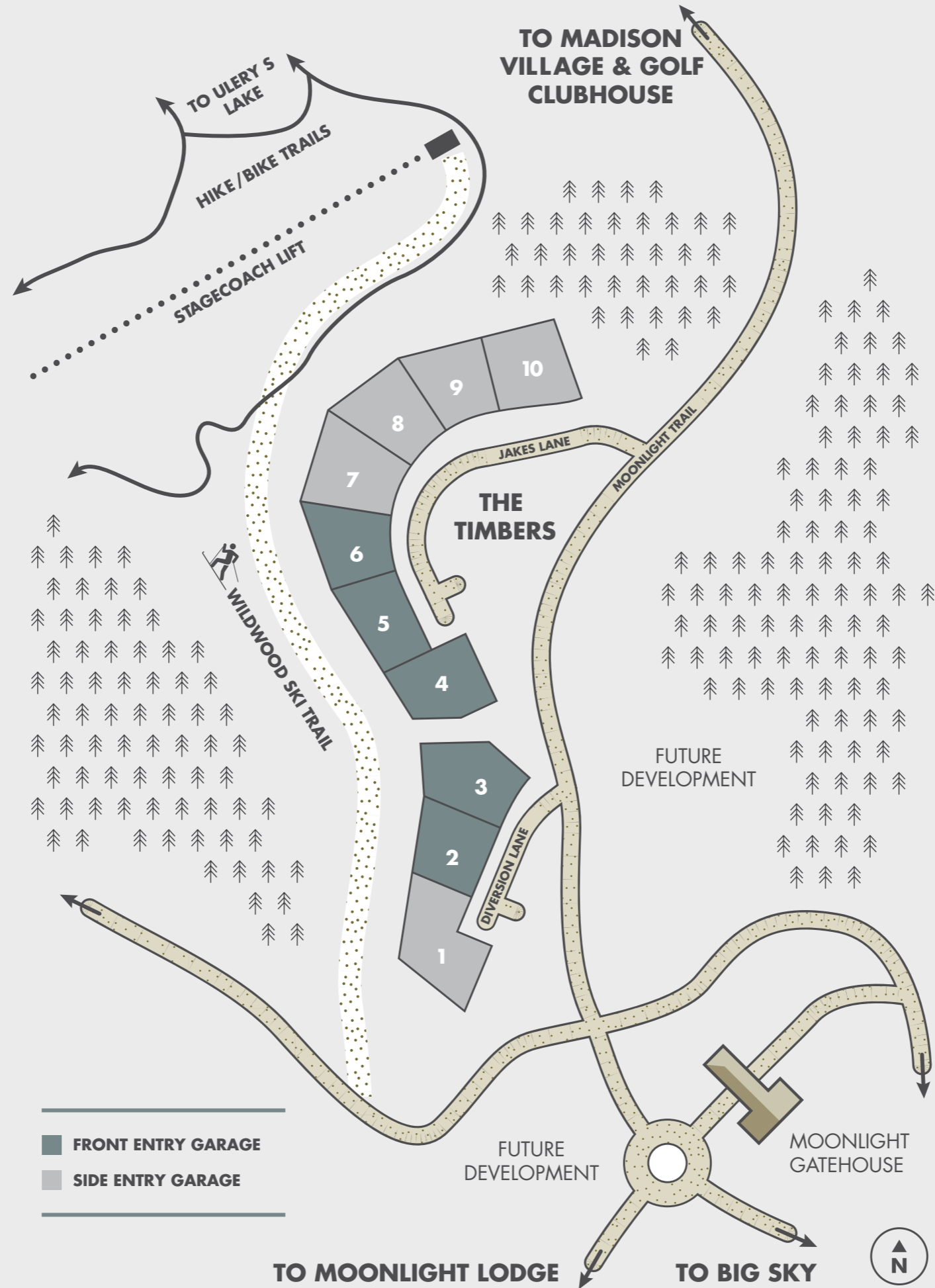
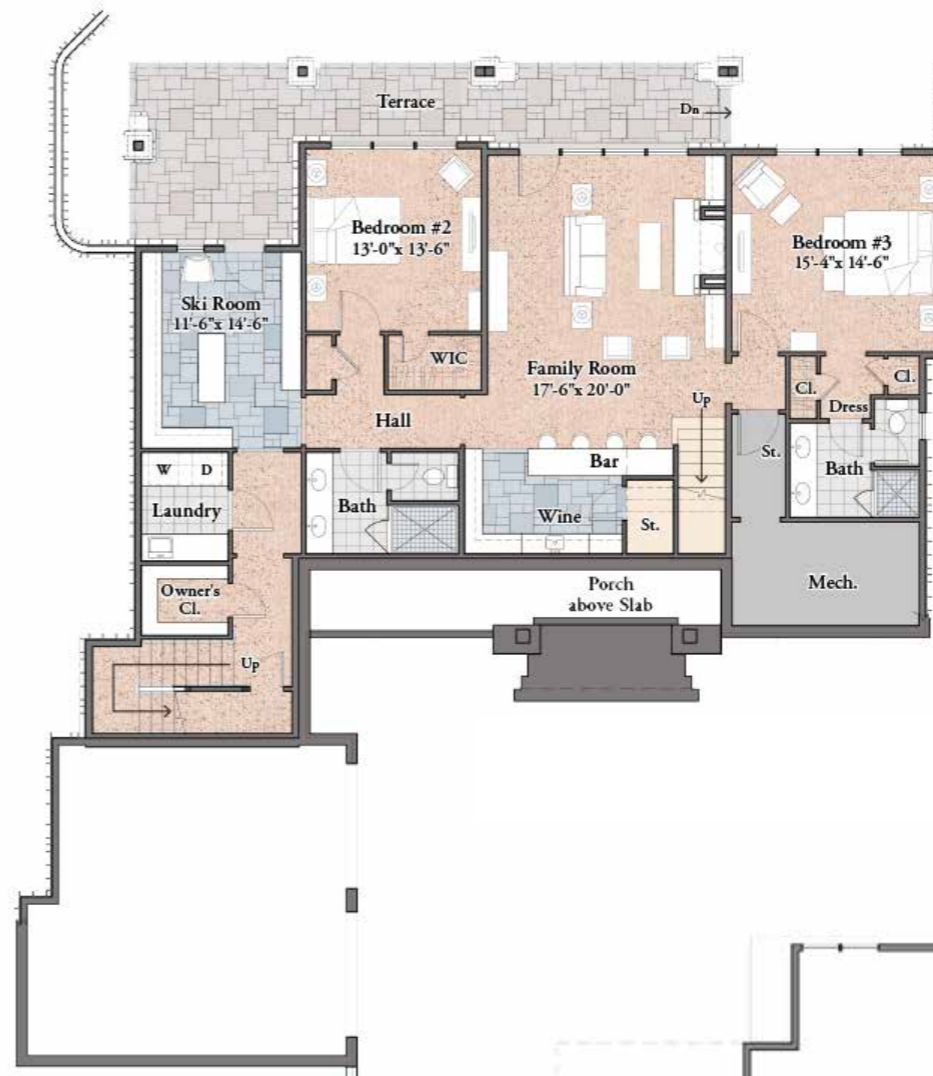


**THE
TIMBERS**
+ LOT MAP





ENTRY LEVEL
2,144 SQ. FT.



LOWER LEVEL
1,616 SQ. FT.

OPTIONAL 6 BEDROOM
443 SQ. FT.



UPPER LEVEL
765 SQ. FT.



HOMESITES 1, 7

5 BEDROOM | 4.5 BATH
4,525 SQ. FT.
2 car garage

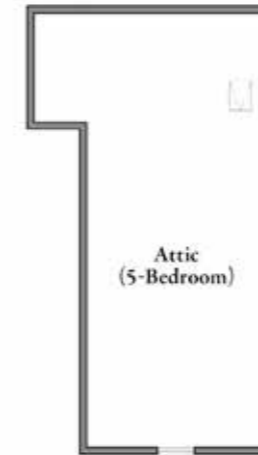
6 BEDROOM | 5.5 BATH
4,968 SQ. FT.
2 car garage



ENTRY LEVEL
2,089 SQ. FT.



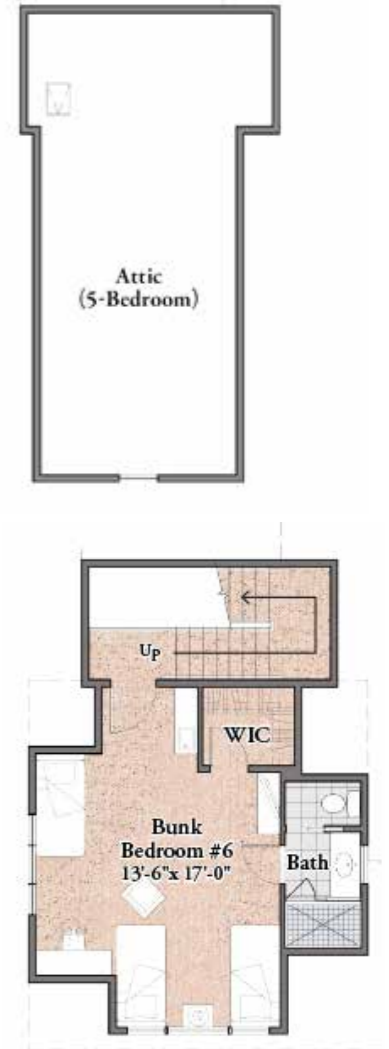
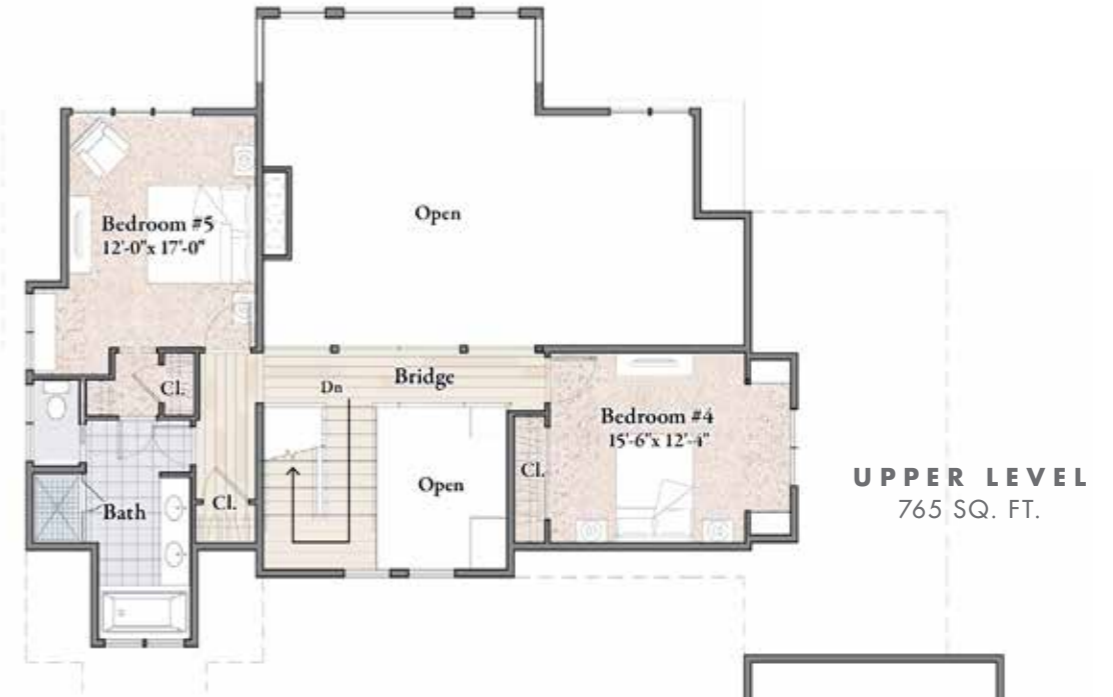
LOWER LEVEL
1,596 SQ. FT.



HOMESITES 2, 3, 4, 5, 6

5 BEDROOM | 4.5 BATH
4,450 SQ. FT.
2 car garage

6 BEDROOM | 5.5 BATH
4,847 SQ. FT.
2 car garage



HOMESITES 8, 9, 10

6 BEDROOM | 5.5 BATH
4,968 SQ. FT.
2 car garage

6 BEDROOM
443 SQ. FT.

For More Information, Please Contact

**THE BIG SKY
REAL ESTATE CO.**



**MOONLIGHT
BASIN**

T 406.995.6333 **E** INFO@BIGSKY.COM

All information contained herein is derived from sources deemed reliable; however, the content contained herein is not guaranteed by Lone Mountain Land Company LLC or its affiliated or parent companies, subsidiaries, officers, managers, employees, agents, brokers or salespersons and none of the foregoing make any representations regarding the accuracy of such information. Any floor plans, square footage, photos, illustrations/renderings, maps, features and amenities described herein are for illustrative purposes only and are subject to change without notice. Offerings are subject to error, omissions, prior sales, price changes or withdrawal without notice. Prospective purchasers are urged to independently investigate the property. No governmental agency has judged the merits or value, if any, of this property. This material shall not constitute an offer to sell in any state or other jurisdiction where prior registration is required and shall not constitute a solicitation if you are working with another real estate agent. © 2018 Lone Mountain Land Company LLC. All rights in and to the content are owned or controlled by Lone Mountain Company LLC and its affiliated or parent companies. Any unauthorized reproduction is expressly prohibited.