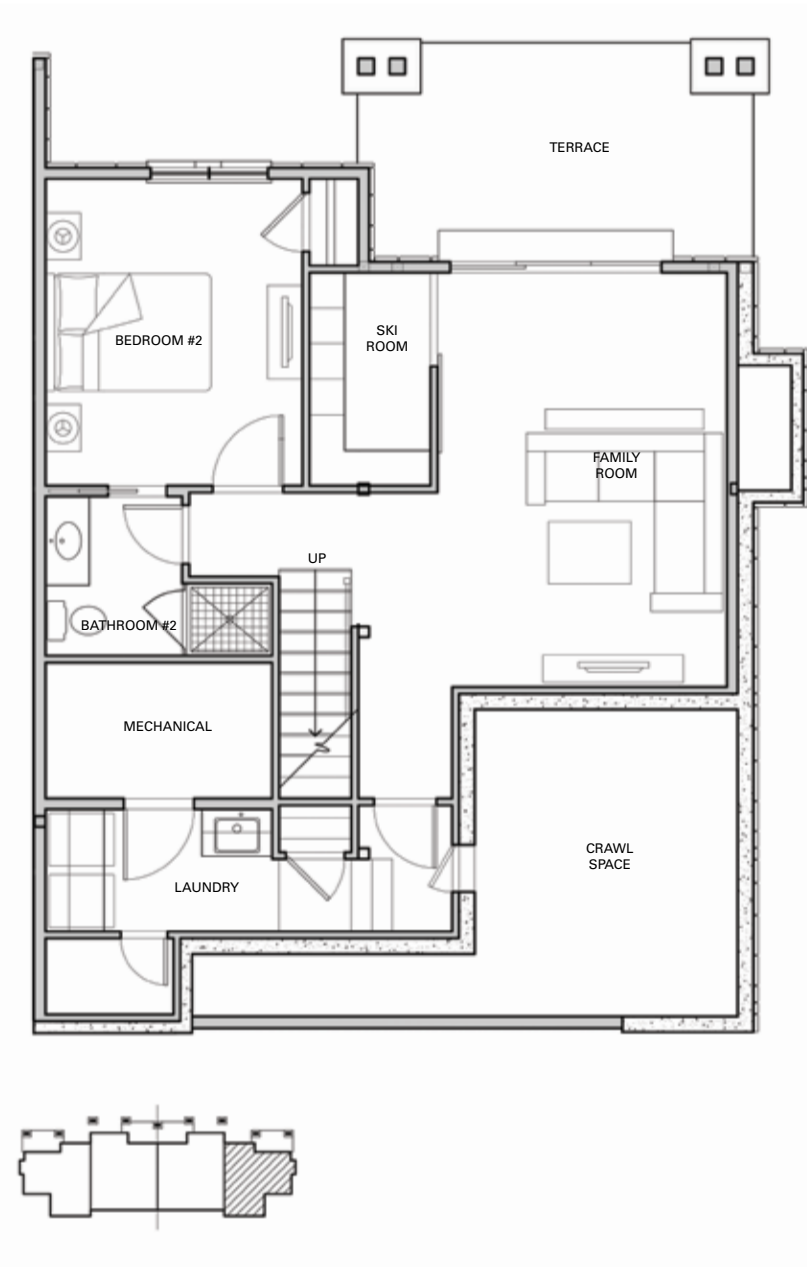


# CONDO A FLOOR PLANS

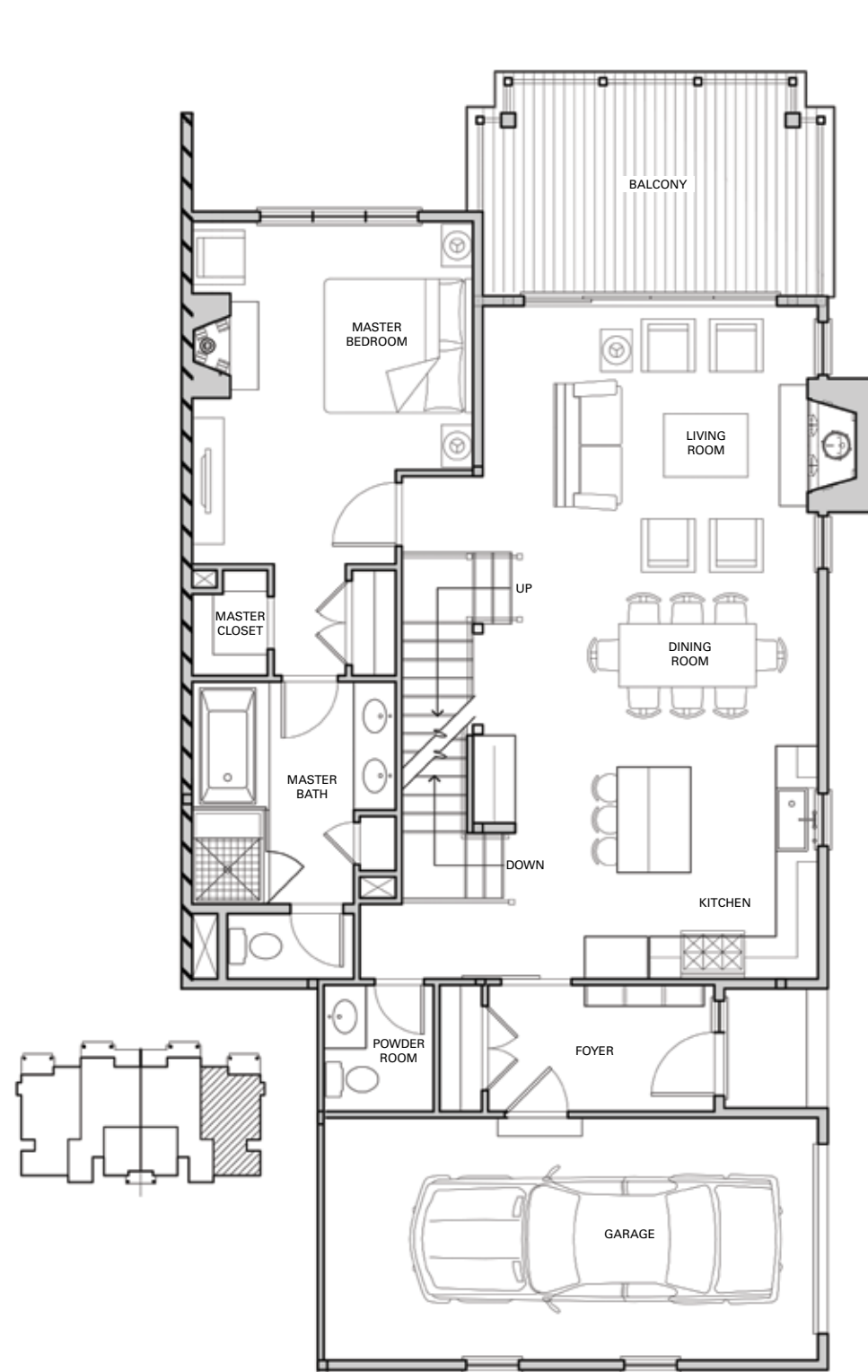
4 BEDROOM | 4.5 BATHROOM | 2,536+/- SQ. FT.

GATEWAY  
MOONLIGHT BASIN

## LOWER LEVEL 707 SQ. FT.



## MAIN LEVEL 1,179 SQ. FT.



## UPPER LEVEL 650 SQ. FT.



THE BIG SKY REAL ESTATE CO.

T 406.995.6333 E INFO@BIGSKY.COM BIGSKY.COM



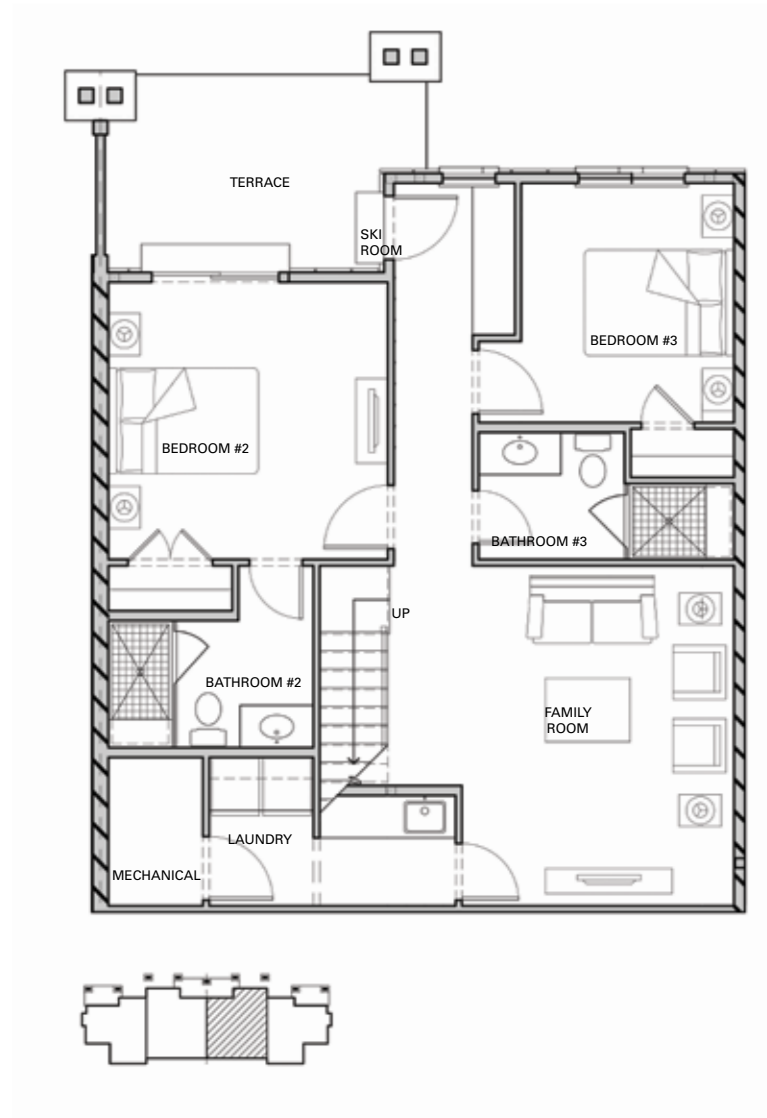
All information contained herein is derived from sources deemed reliable; however, the content contained herein is not guaranteed by Lone Mountain Land Realty LLC or its affiliated or parent companies, subsidiaries, officers, directors, members, managers, employees, agents, brokers or salespersons and none of the foregoing make any representations regarding the accuracy of such information. The information, plans, maps, square footages, illustrations, renderings, photos, and features and amenities described herein are for illustrative purposes only and are subject to change without notice. Offerings are subject to error, omissions, prior sales, price changes or withdrawal without notice. Prospective purchasers are urged to independently verify each and every offering to their satisfaction. No governmental agency has judged the merits or value, if any, of this property. This material shall not constitute an offer to sell in any state or other jurisdiction where prior registration is required. The purchase of a Gateway Condominium property does not include membership in Moonlight Club, or any right to use the private club facilities. © 2019 Lone Mountain Land Realty LLC. All rights in and to the content are owned or controlled by Lone Mountain Land Realty LLC. Any unauthorized reproduction is expressly prohibited.

UPDATED 02.28.19

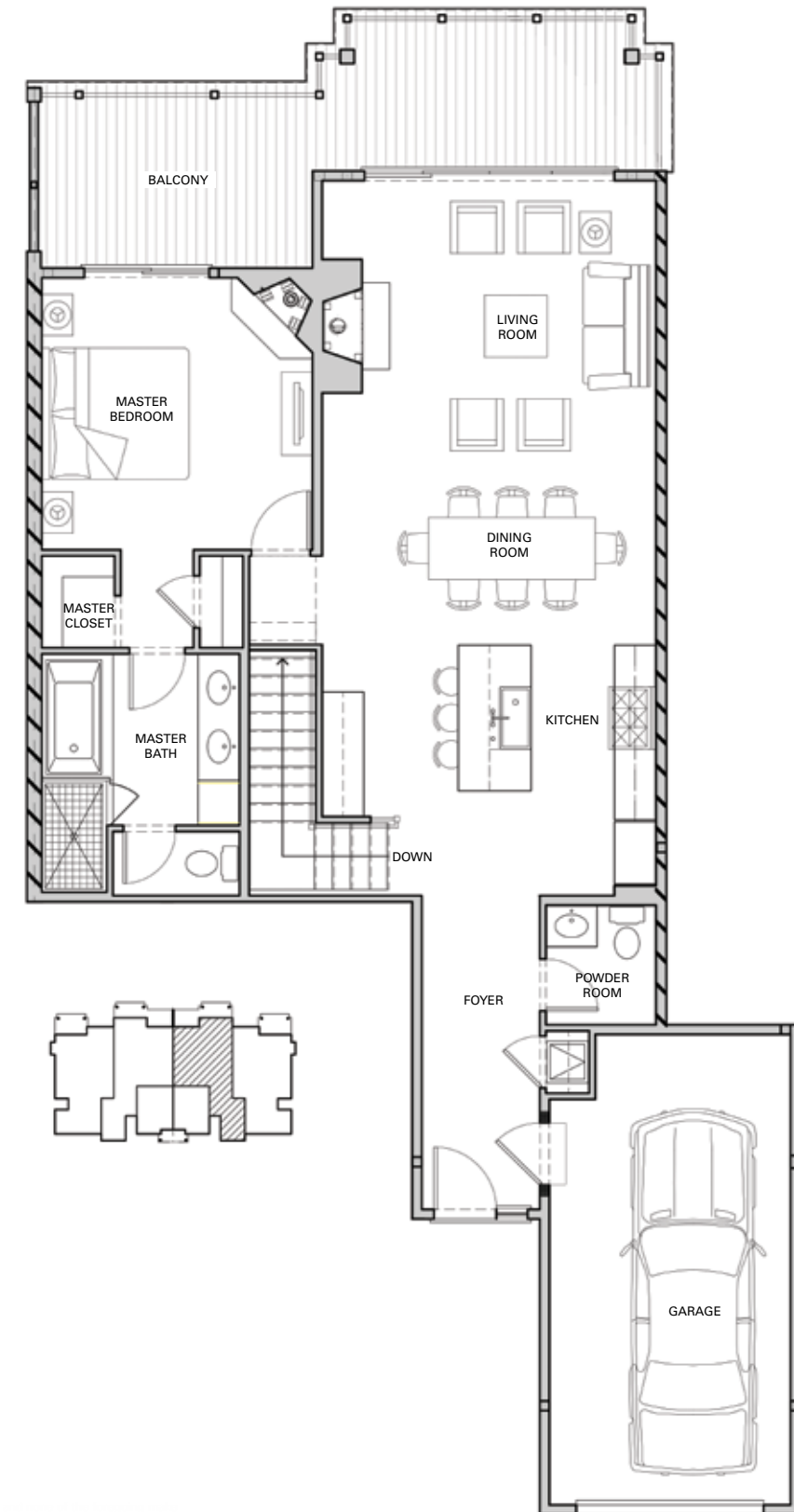
**CONDO B FLOOR PLANS**  
 3 BEDROOM | 3.5 BATHROOM | 2,057+/- SQ. FT.



**LOWER LEVEL**  
 924 SQ. FT.



**MAIN LEVEL**  
 1,133 SQ. FT.



**THE BIG SKY REAL ESTATE CO.**

T 406.995.6333 E INFO@BIGSKY.COM BIGSKY.COM

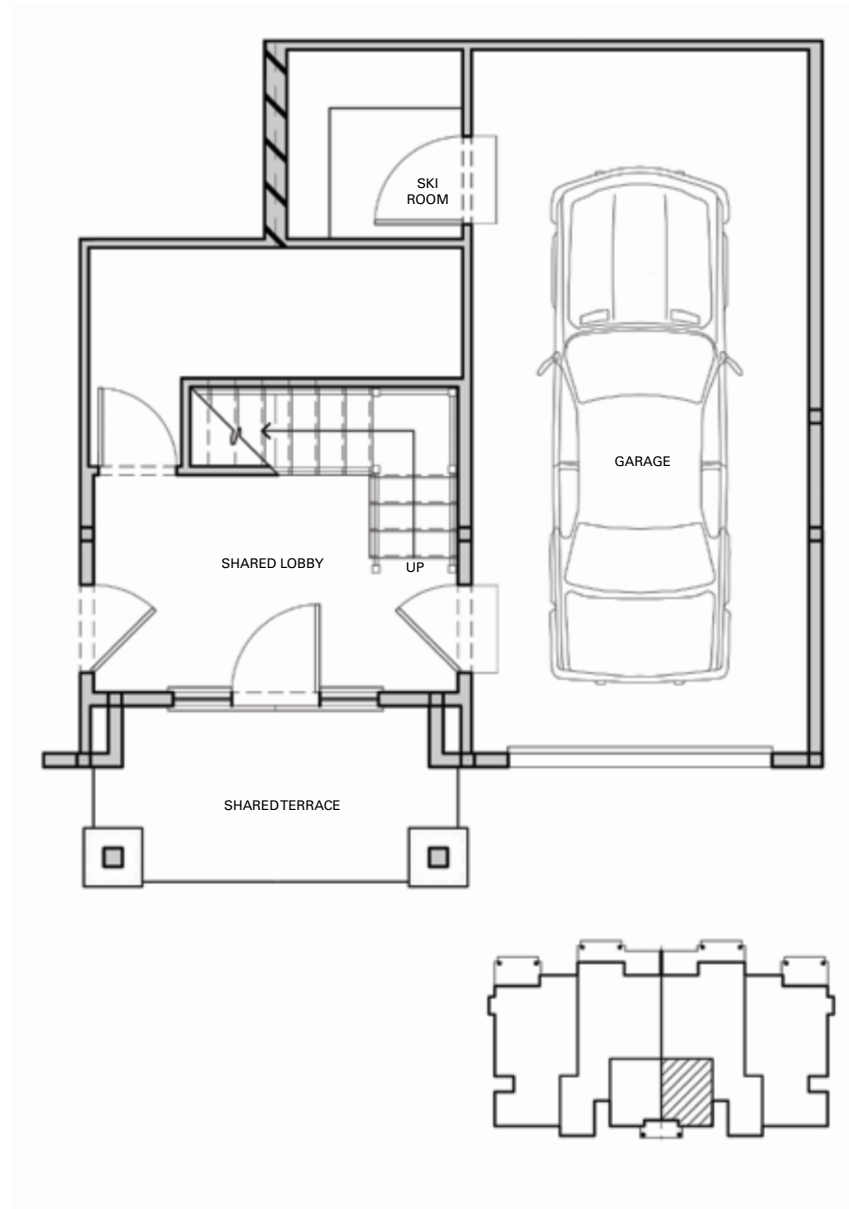


All information contained herein is derived from sources deemed reliable; however, the content contained herein is not guaranteed by Lone Mountain Land Realty LLC or its affiliated or parent companies, subsidiaries, officers, directors, members, managers, employees, agents, brokers or salesperson; any representations regarding the accuracy of such information. The information, plans, maps, square footages, illustrations, renderings, photos, and features and amenities described herein are for illustrative purposes only and are subject to change without notice. Offerings are subject to error, omission or withdrawal without notice. Prospective purchasers are urged to independently verify each and every offering to their satisfaction. No governmental agency has judged the merits or value, if any, of this property. This material shall not constitute an offer to sell in any state or other jurisdiction where prior to the purchase of a Gateway Condominium property does not include membership in Moonlight Club, or any right to use the private club facilities. © 2019 Lone Mountain Land Realty LLC. All rights in and to the content are owned or controlled by Lone Mountain Land Realty LLC. Any unauthorized reprinting or distribution is strictly prohibited.

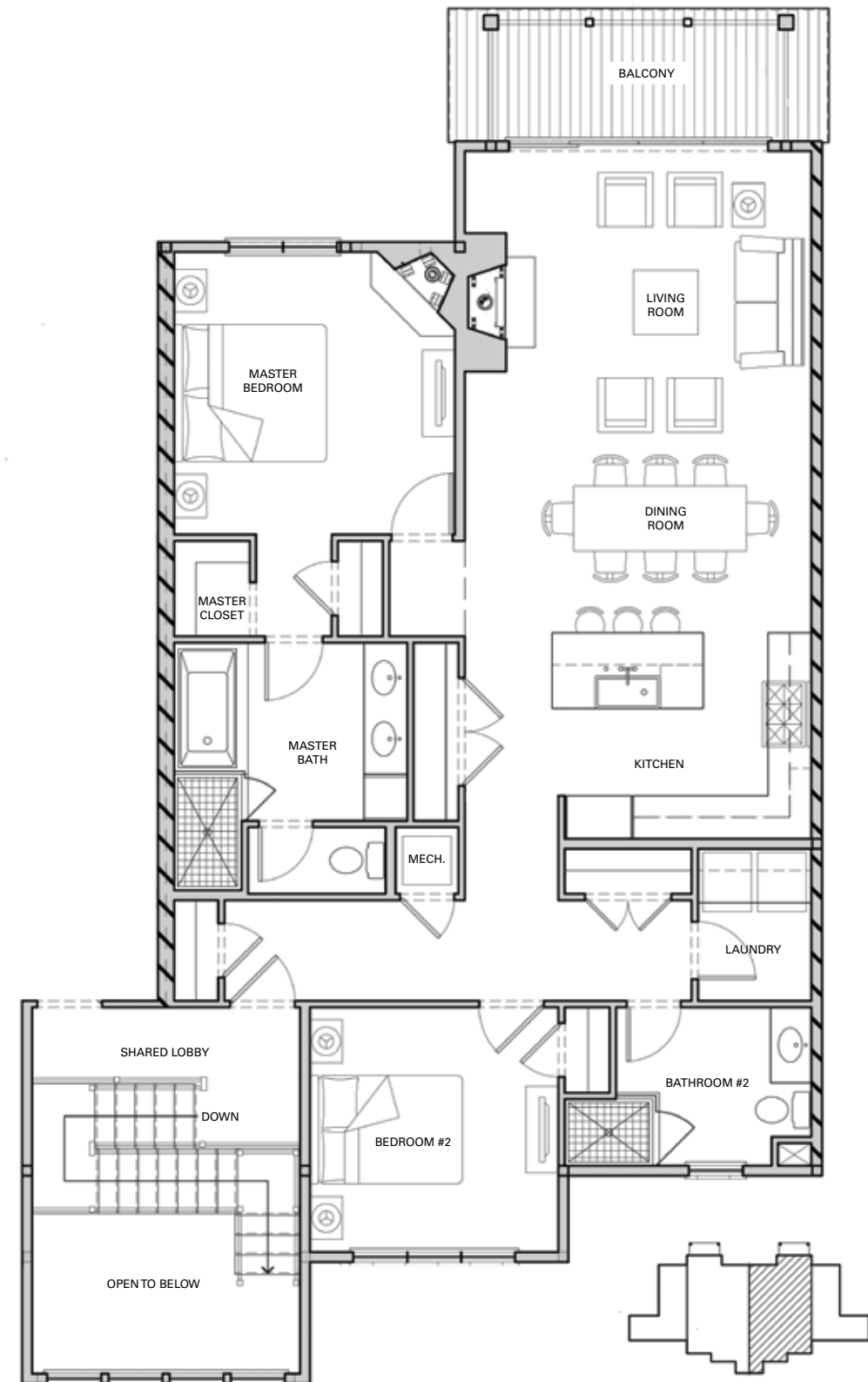
**CONDO C FLOOR PLANS**  
2 BEDROOM | 2 BATHROOM | 1,371+/- SQ. FT.



**LOWER LEVEL**  
GARAGE & SKI ROOM



**MAIN LEVEL**  
1,371 SQ. FT.



**THE BIG SKY REAL ESTATE CO.**

T 406.995.6333 E INFO@BIGSKY.COM BIGSKY.COM



All information contained herein is derived from sources deemed reliable; however, the content contained herein is not guaranteed by Lone Mountain Land Realty LLC or its affiliated or parent companies, subsidiaries, officers, directors, members, managers, employees, agents, brokers or salespersons and none of the foregoing make any representations regarding the accuracy of such information. The information, plans, maps, square footages, illustrations, renderings, photos, and features and amenities described herein are for illustrative purposes only and are subject to change without notice. Offerings are subject to error, omissions, prior sales, price changes or withdrawal without notice. Prospective purchasers are urged to independently verify each and every offering to their satisfaction. No governmental agency has judged the merits or value, if any, of this property. This material shall not constitute an offer to sell in any state or other jurisdiction where prior registration is required. The purchase of a Gateway Condominium property does not include membership in Moonlight Club, or any right to use the private club facilities. © 2019 Lone Mountain Land Realty LLC. All rights in and to the content are owned or controlled by Lone Mountain Land Realty LLC. Any unauthorized reproduction is expressly prohibited.